



PRIVATE PILOT LICENCE (PPL)

TRAIN HERE, FLY ANYWHERE



#TheSkylsCalling

PRIVATE PILOT LICENCE - NAVIGATE YOUR WAY TO SUCCESS

Having obtained your Recreational Pilot Licence (RPL), the next stage in your flight training process is learning how to navigate from point A to point B, and expanding your horizons beyond the 25 nautical mile range of your departure airport.

On the way to obtaining your **Private Pilot Licence (PPL)**, you will plan and execute navigational flights, whilst improving on the fundamental flying skill-set you developed during the RPL course.



WHAT DOES HAVING A PRIVATE PILOT LICENCE (PPL) ALLOW YOU TO DO?

Once you have completed the flight test and obtained your Private Pilot Licence (PPL), you will be licensed to fly as Pilot in Command to both plan and conduct navigational flights throughout Australia in any CASA registered aircraft, carrying up to a maximum of 5 passengers.

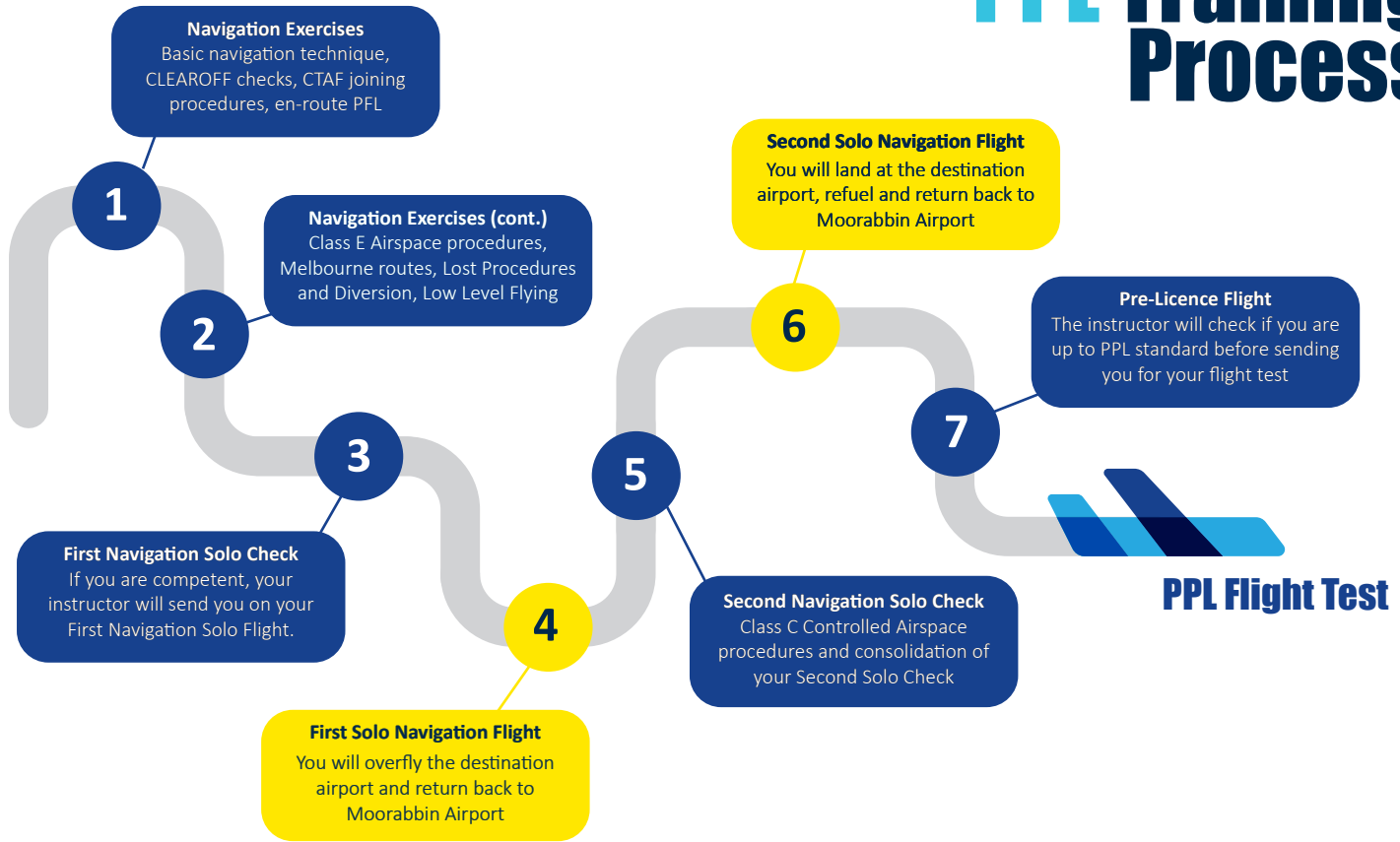
The confidence and skill-set to fly further and longer is a crucial step in any pilot's aviation journey. All flight hours count towards your Commercial Pilot Licence (CPL).





TRAINING PROCESS & COURSE SYLLABUS

PPL Training Process



PPL FLYING SYLLABUS - INTEGRATED COURSE

Navigation Exercise 1

Basic navigation technique, CLEAROFF checks and CTAF joining procedures.

Navigation Exercise 2

CTAF joins, inclusive of a full stop and taxi. Introduce en-route PFL. Introduce Melbourne Inland and Coastal Route.

Navigation Exercise 3

Introduce Class E Airspace. Introduce low level flying, Lost Procedure and Diversion.

Navigation Exercise 4

This lesson consolidates your First Navigation Solo Check and if your instructor believes you are competent to navigate and return back to your home aerodrome you will be sent on your First Navigation Solo.

First Solo Navigation Flight (Navigation Exercise 5)

Your First Solo Navigation Flight will be a short one, in which you will overfly the destination airport and return back to Moorabbin Airport.

Navigation Exercise 6

Introduce Class C Controlled Airspace procedures.

Navigation Exercise 7

This lesson consolidates your Second Navigation Solo Check and if your instructor believes you are competent to navigate and return back to your home aerodrome you will be sent on your Second Navigation Solo.

Second Navigation Solo Flight (Navigation Exercise 8)

Your second solo navigation flight will be longer than the first one. You are required to land at the destination airport, refuel and return back to Moorabbin Airport.

Navigation Exercise 9

A summary flight, where the instructor will check if you are up to PPL standard before sending you for your flight test.

PPL Flight Test

The testing officer will check if you can effectively demonstrate all that you have learnt through your flight training. If they are satisfied with your knowledge and skills, you will be awarded your Private Pilot Licence.

PPL Course Duration



FULL TIME 4-6 WEEKS

Flying and studying 4-5 days per week



PART TIME 4-6 MONTHS

Flying and studying 1-2 days per week

*Average duration based on past students. Course duration will depend entirely on individual student time commitment.

AIRCRAFT SELECTION





DA40

Diamond Aircraft

Continental CD-135 Engine/Lycoming IO-360
Garmin G500 or Garmin G1000 Avionics
Maximum Take-Off Weight (MTOW) 1150/1200kgs
Cruising Speed 130kts
4 Seater



SLING 2

The Airplane Factory



Rotax 912 ULS Engine

Garmin G3X Touch-Screen Avionics

Maximum Take-Off Weight (MTOW) 600kgs

Cruising Speed 110kts

2 Seater



172 SKYHAWK

Cessna

Lycoming IO-360-L2A Engine

Garmin G430 Avionics + Analogue Instruments

Maximum Take-Off Weight (MTOW) 1100kgs

Cruising Speed 122kts

4 Seater





FLIGHT PACKAGE & PAYMENT OPTIONS




FLIGHT PACKAGE - PACKAGE DETAILS



Package	Sling 2	Cessna 172	Diamond DA40
Dual & Supervised Solo Flight Training Hours	30 Hours	30 Hours	30 Hours
Simulation Training Hours	1 Hour	1 Hour	1 Hour
Online Student Portal Access	✓	✓	✓
PPL Theory Course (Online Subscription) + Mock Exams	✓	✓	✓
Briefings & De-Briefings	✓	✓	✓
Flight Computer & Plotter	✓	✓	✓
WAC and VNC Maps	✓	✓	✓
Flight Test Fee	✓	✓	✓
Cost	\$13,250	\$14,250	\$16,250
Bob Tait PPL Theory Book Vol 2 (Optional)	Additional \$103	Additional \$103	Additional \$103
RPL Theory Course- Face-to-Face (Optional)	Additional \$1,295	Additional \$1,295	Additional \$1,295

Online Student Portal access includes full subscription to online theory course, including mock exams. You may be required to purchase ancillary items not provided in the package, including Aviation Medical Check, additional competency and flight test flying hours (if required), and landing fees at other airports during navigational flights. Current as at July 2021.

FLIGHT PACKAGE - PAYMENT OPTIONS

Aircraft	Option 1 Upfront Payment	Option 2 Interest Free Instalments
 Sling 2	\$13,250	From \$1,657/month x 8 interest free instalments
 Cessna 172	\$14,250	From \$1,782/month x 8 interest free instalments
 Diamond DA40	\$16,250	From \$1,625/month x 10 interest free instalments



Prices are in AUD and are subject to change. You will be charged based on the current pricing schedule at the time of booking. Current as at July 2021. **Splitit** allows you to split your costs over multiple interest free monthly instalments. Visit www.learntofly.edu.au/splitit for full details.

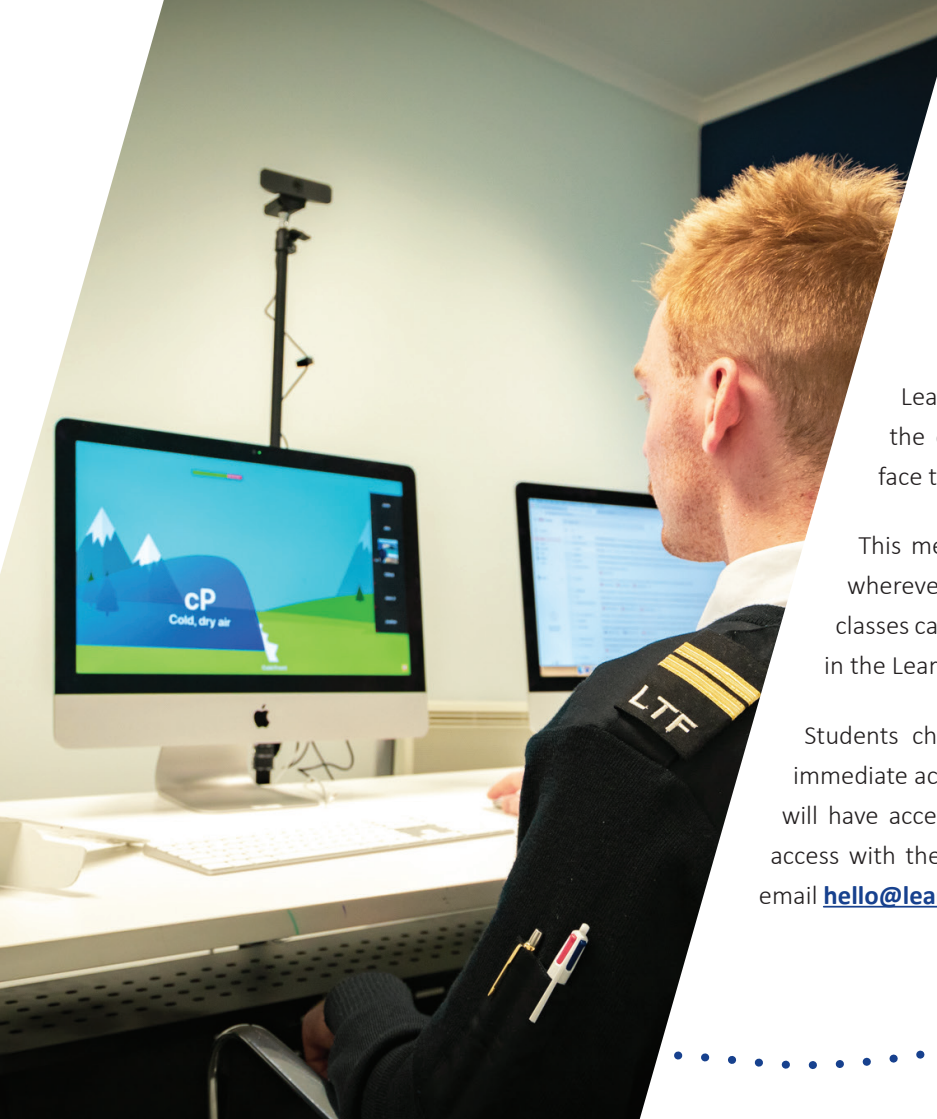
PAY AS YOU FLY - PRICING

	Sling 2	\$338/hr (Dual Rate)
	Cessna 172	\$388/hr (Dual Rate)
	Diamond DA40	\$458/hr (Dual Rate)
	Theory Lessons	\$75/hr

Pay As You Fly rates do not include the purchase of required items including simulation hours, course theory materials, exams, flight tests, uniform and logbooks. Ancillary items can total approx \$1,600. Theory packages are available, that include full access to the Learn To Fly Student Portal features - please email hello@learntofly.edu.au for details. Prices are in AUD and are subject to change. You will be charged based on the current pricing schedule at the time of booking. Current as at July 2021.



ONLINE TRAINING OPTIONS

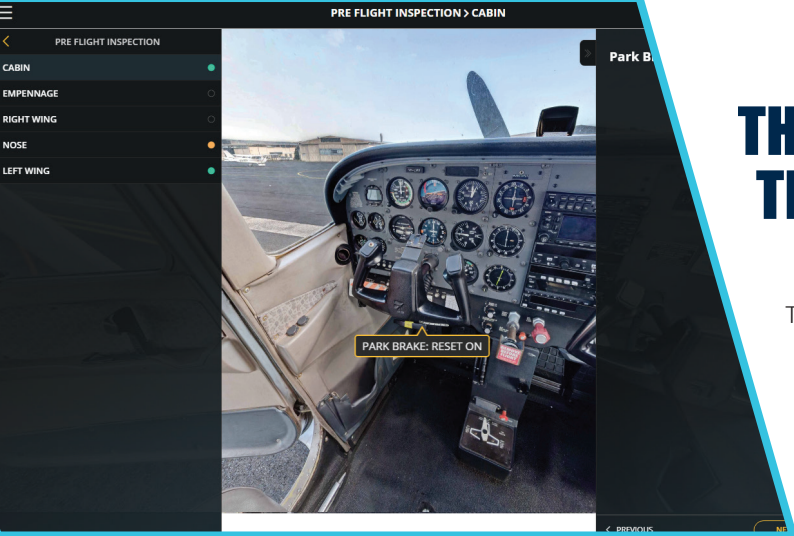


FLEXIBLE OPTIONS TO COMPLETE YOUR THEORY TRAINING

Learn To Fly embraces the latest technology to allow you the option to complete your theory training in traditional face to face classes, or online.

This means that you can complete your theory training from wherever you are in the world, at your own pace. Online theory classes can be offered as a live online class, or watched at any time in the Learn To Fly Student Portal by subscription.

Students choosing our Flight Package payment option will have immediate access to all features of the portal. Pay As You Fly students will have access to limited features in the portal, but can enjoy full access with the purchase of a Theory Package. For more information email hello@learntofly.edu.au.

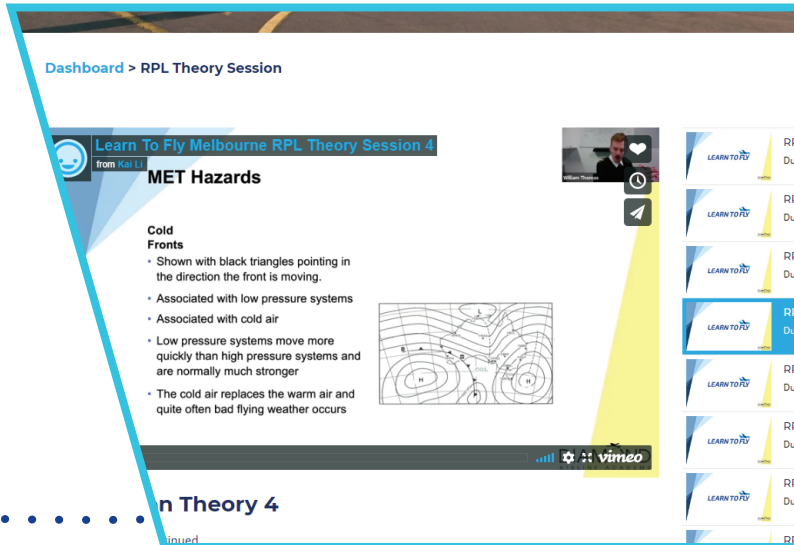


THE LTF STUDENT PORTAL LETS YOU TRAIN ANYTIME, ANYWHERE

The Learn To Fly Online Student Portal takes your flight training to the next level, allowing you to access state-of-the-art features to **advance your learning anytime, anywhere.**

Aircraft Procedural Training with V360E Virtual Cockpit

We are the first flight school in Australia to offer access to 360 degree virtual cockpit environments using the V360E platform. This amazing technology allows students to view the cockpit and run through detailed checklists and procedures, better preparing you for your time in the actual aircraft. Only available with Flight/Theory Package purchase.



Online Theory Training

Our student portal gives you 24 hour access to each of the individual ground theory training sessions in your chosen course, conducted by an experienced instructor and recorded live. You can watch and re-watch theory sessions as many times as you like. Only available with Flight/Theory Package purchase.

MOCK EXAMS

Dashboard > RPL Mock Exams

Examination and Task list

Item ID	Examination and Task	Completed by	Link
RPL-1	RPL Mock Exam 1		Take exam
RPL-2	RPL Mock Exam 2		Take exam
RPL-3	RPL Mock Exam 3		Take exam

TRACK YOUR TRAINING PROGRESS AND PREPARE FOR SUCCESS

Preparation is the key to success, and the Learn To Fly Online Student Portal gives students and their instructors the ability to see exactly how they are progressing through a course.

Live Flight Training Sequence Updates

The portal allows students to track their progression through every component of their course, with links to important information and each task overseen directly by their primary Learn To Fly Flight Instructor.

Student may require the following documents to complete the RPL training:

CAR 1988, CASR Part 61, CAO, ERSA, VFRC, Bob Tait PPL Book VOL 1 & 2, VTC map

Training Sequence

Examination and Task	Completed by	Link	Status
ARN Application	Lesson 1 EOC	Click here	Completed
Aviation Security Identity Card	Lesson 1 EOC	Click here	Completed
Class 1 OR Class 2 Medical Check	Lesson 4 Turning	Click here	Completed
Aircraft Engineering Paper	Lesson 4 Turning	Download	Completed
Pre-Solo Assignment	Lesson 7 Circuit		Completed
Pre-Solo Exam	Lesson 11 Circuits Flapless	Not available	Result pending
AELP Test	Lesson 11 Circuits Flapless		Completed
FROL	Lesson 11 Circuits Flapless	Take exam	Incomplete
Pre-Area Solo Assignment	Lesson 18 Solo Circuits 2		Completed
Aircraft Questionnaire	Lesson 18 Solo Circuits 2	Take exam - Sling	Incomplete
Pre-Area Solo Exam	Lesson 20 Forced Landing	Not available	Result pending
RPL Assignment	Lesson 24 First Training Area Solo		Incomplete

Mock Exams

For students preparing for their theory exams, the portal offers timed mock exams that simulate the actual exam environment, so you are as prepared as possible for the real thing. Only available with Flight/Theory Package purchase.



OUR GRADUATE: BRANDON SMITH

“The PPL course has introduced me to navigating an aircraft, which is a fundamental part of my future career aspirations. What I love most about Learn To Fly is the modern facilities and the availability of instructors, who are there whenever you need anything. After my PPL, I look forward to starting on the CPL syllabus!” – Brandon Smith



CONTACT US

Melbourne, Australia (Headquarters)

22-24 Northern Avenue
Moorabbin Airport, Victoria, Australia 3194
1300-532-768 | hello@learntofly.edu.au

Singapore

Level 11, HarbourFront Tower 2
3 Harbourfront Place
Singapore 099254
+65 9368 8522 / +65 8668 0591 | hello@learntofly.edu.au

Hong Kong

Room 406, Chung Fung Commercial Building
21-25 Cheung Sha Wan Rd, Kowloon, Hong Kong
+852 6809 4120 / +852 9450 5616 | hello@learntofly.edu.au

FOLLOW US

